

INTERESTING ITEMS FROM THE COLLECTION

CCR Nobbs store was located on New Farm Road. The store was a well-known general store operated by Charles Chase Ray Nobbs and his daughters. By the 1980s John Nobbs had set the building up to sell different woodcrafts and souvenirs produced onsite. An advertisement notes 'wood products by NOBBSBRAND' adding the store was the oldest shop on Norfolk Island being established in 1886. The original building was sadly burnt down, a copy of the structure still sits on the property and can be viewed from the road.



Image 1: NIM682 Rocking horse

One artefact always linked with CCR Nobbs store was a little wooden rocking horse in the Norfolk Island Museum Trust (NIMT) collection. However little was known about the horse until a query shed new light on this wooden toy.

Local Carrie Gilmore visited the Pier Store looking for the rocking horse as she had clear memories of playing on a similar one as a child. Her father Philip 'Phil' Gilmore worked at the CCR Nobbs store when he first arrived on Norfolk in the 1989 from Australia. The store provided him a trainee environment to learn woodworking and he was asked to make a rocking horse. He made at least three, one being made for No.10 Quality Row. It was perhaps made to join the house museum display shortly after it was opened in 1988.



Image 2: Close up of Rocking

The horse is built out of Norfolk pine and is quite sturdy. Secured with screws, any visible attachments are disguised with wooden screw cover caps. It also shows signs of regular use with the rocking bar showing scratches and abrasion. Big enough to accommodate a child until the age of roughly eight, the rocking horse was clearly popular and used at one time. It is decorated with yellow wool for its mane, tail and brown fabric ears. The museum would like to thank Carrie Gilmore for her help contextualizing this piece of Norfolk history.

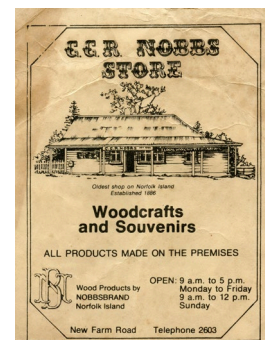


Image 3: NIM23930 CCR Nobbs advertisement

If anyone remembers riding this lovely rocking horse at No.10 or CCR Nobbs store or have seen either of the other two examples made by Phil Gilmore we'd love to hear from you. If you would like to view the rocking horse in person please feel free to ring 23788 or email us at info@museums.gov.nf to organize a time.

Bethany Holland
COLLECTIONS OFFICER
24 November 2021

